

# CHARGE INLET TYPE I



## BENEFITS

- Interface complies with SAE J1772 and IEC62196 Type I standard
- Panel mounts to vehicle
- Protective grommet/wire dress mounts to inlet

## FEATURES

- Supports multiple levels of AC currents: Level 1 (15A, 120V) and Level 2 (32A, 240V)
- Validation: UL recognized

## APPLICATIONS

Plug-in hybrid and electric on-vehicle charge inlet (1-phase AC charging)

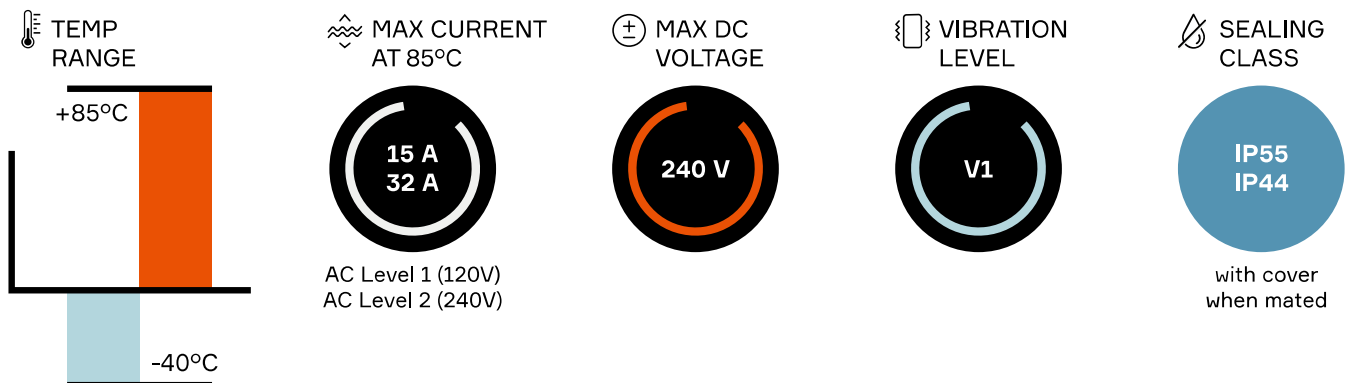
## TECHNICAL CHARACTERISTICS

Validation	UL recognized
Mating Cycles	10 000

## AVAILABLE CONFIGURATIONS

Connector Type	Vehicle inlet
Cable Exit Orientation	180°
Cable Range (mm <sup>2</sup> )	2 - 5 (AC)
Terminal Type	Round terminals
# of Terminals	AC: 3 Signal: 2
Shielding Type	Unshielded

## PERFORMANCE



Part number	Description	BOM
13826395	Cover opens left	1

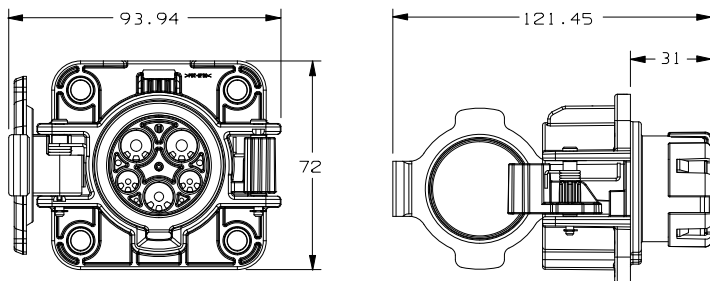
## ASSOCIATED PARTS

Part Number	Description	Wire size range (AWG)	Wire section (mm <sup>2</sup> )	BOM
<b>Terminals</b>				
13884348	1.5 mm pin	18	0.75	2
13884350	2.8 mm pin	14	2.5	1
13884351	2.8 mm pin	10	5	
13884352	3.6 mm pin	14	2.5	2
13884353	3.6 mm pin	10	5	

Part number	Description	BOM
<b>Grommet</b>		
13826280	Grommet wire protection	1

Part number	Description	BOM
<b>TPA</b>		
13826277	TPA	1

## DIMENSION MEASUREMENT SAMPLE



13826395